



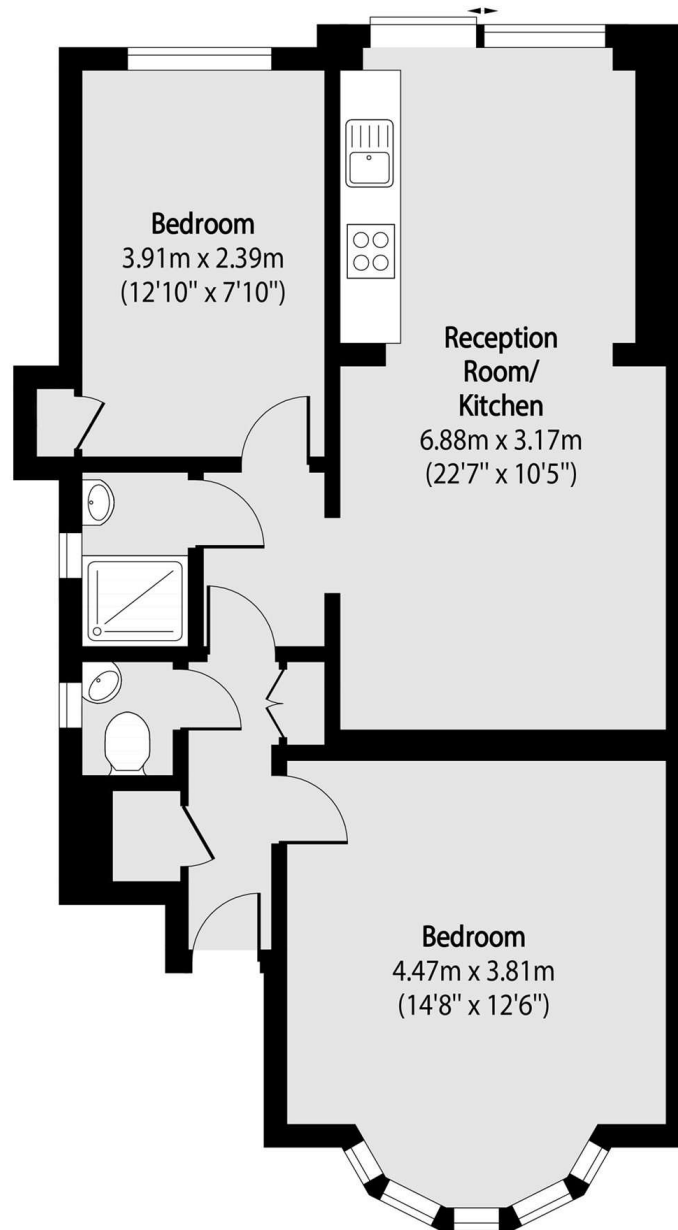
Eastcote Lane, HA2

£329,950

A spacious two bedroom ground floor maisonette with private garden, off-street parking, includes Freehold, Offering over 600 sq ft, the property features an open-plan living/dining/kitchen area with patio doors to the garden, bright master bedroom with bay window, second rear-facing bedroom, shower room and separate WC. Benefits include gas central heating and double glazing.

Eastcote Lane is located off Northolt Road with just a 2 minute walk to South Harrow's busy shopping center and Piccadilly Line Tube and bus Station. There are a number of local shops and amenities including Waitrose, Iceland, Aldi and Asda.

- Ground Floor Maisonette • Open plan living / Dining / Kitchen • Two Bedrooms •
- Private Section of Garden • Off Road Parking • Includes the Freehold •



Total area (approx): 58.99 sq m (635 sq. ft)

David Conway
020 8422 5222

Energy Rating: C We aim to make our particulars both accurate and reliable. However they are not guaranteed; nor do they form part of an offer or contract. If you require clarification on any points then please contact us, especially if you're travelling some distance to view. Please note that appliances and heating systems have not been tested and therefore no warranties can be given as to their good working order.